

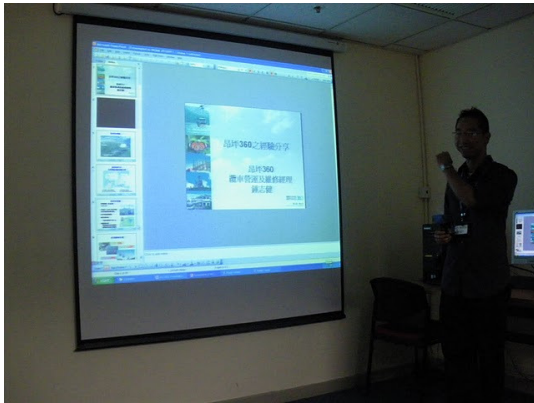
KMDC and HKQMA visit to Ngong Ping 360 [Sept 11 2010]



KMDC and its members were given the treatment of VIPs on 11th September, 2010, during an academic visit to Ngong Ping 360 (NP360). The session was a joint event between HKQMA and us.



The Cable Car Operations and Maintenance Manager for NP360, Mr. C. K. Chung, provided us a great warm-up introduction and an in depth presentation on NP360 about its past, present and near future.



NP360 is owned by the MTR Corporation in Hong Kong. The cable car system operated under NP360 is international recognized as one of the most complex cable car system in the world. It is a bi-cable gondola lift system spanning 5.7 Km in length. As part of the system is built inside the government owned parkland, and consists of only 8 towers along its entire span to minimize the impact to the environment. The longest span of cable system is over 1.5 Km. The system includes 2 unique turning towers where one has a 60 degree turn releasing a panoramic view of the North Lantau. The breath taking view is a result of the solving of many engineering challenges during the construction of the cable car system and its operations after its completion.



Much like the mega projects around the world, the cable car system had to go through some teething problems, management issues and culture shifts during its initial launching period. Mr. Chung described a few initiatives NP360 had done since the earlier PR backlashes from the media. Their recognition of the importance of its people and their Knowledge had helped the company overcome many changes and challenges necessary. Focusing on their Active Improvement Management Program, NP360's has been hailed one of the finest cable car systems in Asia with practices of excellence. Today, NP360 is one of Hong Kong's most visited tourist attraction with high regards, behind only to Ocean Park and Disneyland in Hong Kong.

Mr. Eric Chan, Chairman of KMDC was excited after the event. "...before the session, most of us thought that it was a simple system ...not being aware of and appreciative of the many record-breaking or setting achievements that our "Ngong Ping 360" system has set prominently amongst the thousands of operations in (its) trade in the world.." he said.

All KMDC and HKQMA members were invited to experience the Cable Car at half of the regular price.



KMDC members were given a tour to the NP360 “Garage” in the 2nd part of the tour where they had a first hand view of the construction of the major components of the cable car used.



NP360 looks forward to expanding their services to event organizing. Pictured above is a special crystal decorated cable car jointly developed with Swarovski Hong Kong.

